



## SR SCAFFOLD ENGINEERING PTE LTD

NO. 7 SOON LEE STREET, #02-27 ISPACE , SINGAPORE 627608  
UEN NO. 201506948H

✉ [ENQUIRY@SRSCAFFOLD.COM](mailto:ENQUIRY@SRSCAFFOLD.COM) ☎ +65 6681 6673 FAX: +65 6681 6634



# OUR VALUES

## SAFETY

Safety is our top priority. We adhere strictly to the regulations and we operate in full compliance to the guidelines set in place by various ministries and governing bodies that ensure and enforce workplace safety. We recognize that only when workers are assured of their safety can they work efficiently and effectively. We strive to achieve zero accidents in all of our projects working together with the Main Contractors and their Safety Team.

## BEST QUALITY

We do not compromise on the standards that we set for ourselves, which is to provide top-notch quality products and services to our clients. We hope to offer creative, compliant and practical solutions for our clients' total peace of mind.

## DEDICATION

Your success equates to our success. As such we are committed to helping you every single step of the way and to meet every single one of your needs. We aim to overcome every obstacle and provide a solution to every problem, cost effectively. We aim to harness the best possible experience with all our stakeholders.

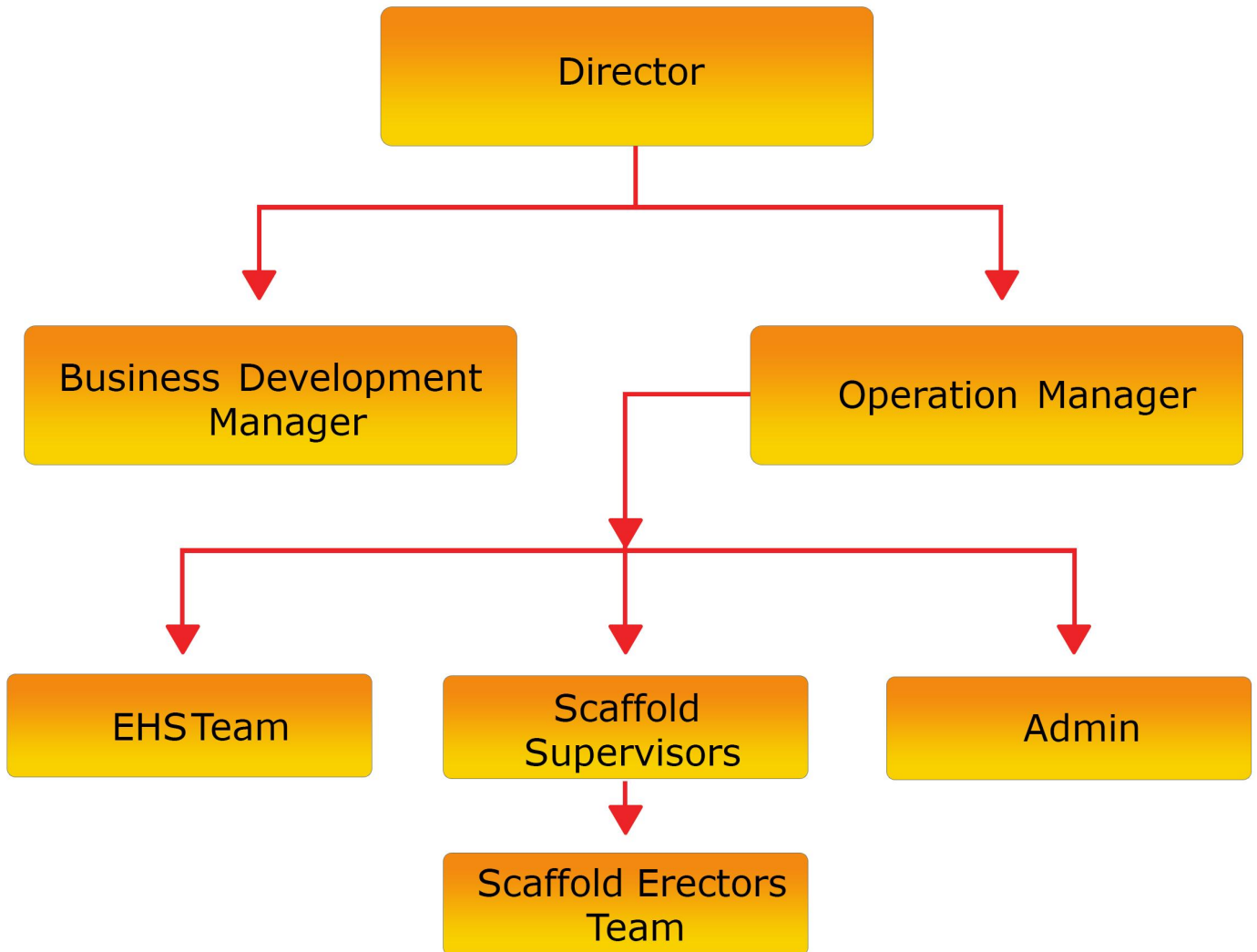
## PROFESSIONALISM

We would work our way around every problem that you may encounter. Our team has excellent foresight and as such we are able to identify potential problems that might arise in the process and provide solutions with the use of our versatile and flexible Tubular system. We seek to conduct ourselves with integrity, credibility and accountability.

## OUR COMMITMENT

We are committed to provide scaffolding solutions catered to individual client's needs of time and accuracy without compromising on safety. Our team of trained personnel is trained in approved training centres by the Ministry of Manpower. Our experience in scaffolding systems allows us to deliver our service efficiently and accurately to our customers. Being Bizsafe Level 3 is a testament to our company's dedication to adhere strictly to protocols and to comply with regulations. Moreover, it promotes and enhances the image of our

# OUR ORGANISATION



# SERVICES

## INDEPENDENT SCAFFOLD

An independent scaffold consists of 2 rows of standards, where each row of standards is parallel to the building. The inner row is set as close to the building as possible, with a maximum distance of 300mm possible, which is sufficient space to allow an inside board to be placed between the inner standard and the building. One must note that it should not be so close such that it affects the access of workers and limits them from working. The distance between the inside and outside standards will be determined by the number of boards required.

Ledgers are fixed to the standards using right-hand couplers, which are also fixed parallel to the building. Transoms are fixed to the ledgers with putlog couplers to support the recommended board widths. Braces are fixed diagonally to the ledgers or standards.

Contrary to its name, the independent scaffold cannot stand alone but has to be supported or "tied" to the building

## CANTILEVER SCAFFOLD

Cantilever scaffold, also known as jib or trussed scaffold, is most commonly used at the tops of buildings, as well in tight corners and other hard to reach areas. The cantilever scaffold is formed with tubes cantilevered out of an opening in the building, perhaps a window. This is done when one does not want to obstruct the space below, which could perhaps be a busy street. One edge is attached to the building while the other is left exposed.

Boards and poles projecting out of the building should be held in place by a tie bolt, which is drilled through the floor slab to ensure stability and security. Every single "floor" built should also be secured to the building with bolts. People working on cantilever scaffolding are often required to wear harnesses as a safety measure

## ACCESS TOWER

Access towers are similar to perimeter scaffolds. However, access towers can be both mobile and static in nature, depending on the need and requirements of the project. Moreover, access towers have ladders fixed to the side of it. It could also be modified such that it has stairs that lead all the way to the top, which is a single level platform.

# SERVICES

## MOBILE SCAFFOLD

Mobile scaffolding is the most versatile scaffolding option available. It has wheels attached to the bottom and hence it can be rolled around and allows quick and easy access to areas where you intend to work on. Moreover, it can be adjusted to various heights, achieving a height more than 4 stories high. It can also range in strength from light duty to heavy duty. Diagonal bars are put in place to enhance the stability and the strength of the mobile scaffold. Joints in standards should only be made with sleeve or parallel couplers and wheels, fitted with brakes should be more than 125mm in diameter.

Mobile scaffolding is often used in the cleaning of windows, the setting up of lights or overhanging furniture or decorations. It could also be used as props in shows and performances. It could also take the form of stairway towers in storage and warehouse facilities.

## PERIMETER SCAFFOLD

Perimeter scaffolding is a standalone scaffolding system that is unattached to the building. The scaffold is secured by drilling relevant supporting structures directly into the ground. This allows flexible access for everyone who is working on the project. It only has a single level work platform. Moreover, it could be assembled and dismantled quickly, enhancing efficiency. This type of scaffold is suitable for construction works on landed property or structures that are not too tall.

## HANGING SCAFFOLD

Hanging scaffold is a scaffold that is hung from a structure that is static in the vertical plane, such as a bridge or the roof of a building. It is stationary in nature and it cannot be raised or lowered by any means. Hanging scaffolds could be hung from tubes, wire rope and even chains. Hanging scaffolds allow us access to difficult, hard-to-reach areas especially areas where there is no solid ground.



# CERTIFICATES



CERTIFICATE N°  
522\_18\_H&S

ASACERT UK Ltd

certifies that the occupational health and safety management system operated by

**SR SCAFFOLD ENGINEERING PTE LTD**

head office

No 7 Soon Lee Street #02-27 ISPACE Singapore 627608

has been considered compliant to the standard requirements of

**BS OHSAS 18001:2007**

for the following activities

**Provision of scaffolding works.**

EA Sector: 28

1<sup>st</sup> ISSUE DATE  
26<sup>th</sup> March 2018

NUMBER & MODIFICATION DATE

EXPIRY DATE  
25<sup>th</sup> March 2021

The validity of this certificate is subject to an annual surveillance and total review of the occupational health and safety management systems every three years.  
The validity of this certificate is under the respect of the rules defined by the ASACERT UK certification systems.

ASACERT UK Ltd  
Chief Executive Officer

For further and updated information about this certificate please contact +44 161 8841248 or the mail address info@asacert.co.uk



ASACERT UK Ltd.  
Assessment & Certification  
76 King Street - M2 4NH  
Manchester - United Kingdom  
+44 161 8841248  
info@asacert.co.uk  
www.asacert.co.uk  
Registration Number 08825684

Date of issue: 03/04/2018

**bizSAFE**  
STAR  
CERTIFICATE

The Workplace Safety and Health Council  
is pleased to certify that

SR SCAFFOLD ENGINEERING PTE. LTD.

has fulfilled the requirements to attain bizSAFE Level Star

This certificate will expire on 25/03/2021

Winston Yew  
Deputy Director, Industry Capability Building  
Workplace Safety and Health Council



Certificate No. E21335



CERTIFICATE N°  
521\_18\_Q

ASACERT UK Ltd

certifies that the quality management system operated by

**SR SCAFFOLD ENGINEERING PTE LTD**

head office

No 7 Soon Lee Street #02-27 ISPACE Singapore 627608

has been considered compliant to the standard requirements of

**ISO 9001:2015**

for the following activities

**Provision of scaffolding works.**

EA Sector: 28

1<sup>st</sup> ISSUE DATE  
26<sup>th</sup> March 2018

NUMBER & MODIFICATION DATE

EXPIRY DATE  
25<sup>th</sup> March 2021

The validity of this certificate is subject to an annual surveillance and total review of the quality management systems every three years.  
The validity of this certificate is under the respect of the rules defined by the ASACERT UK certification systems.

ASACERT UK Ltd  
Chief Executive Officer

For further and updated information about this certificate please contact +44 161 8841248 or the mail address info@asacert.co.uk



ASACERT UK Ltd.  
Assessment & Certification  
76 King Street - M2 4NH  
Manchester - United Kingdom  
+44 161 8841248  
info@asacert.co.uk  
www.asacert.co.uk  
Registration Number 08825684

File Ref No. : 084-010-00983



MINISTRY OF MANPOWER

WORKPLACE SAFETY AND HEALTH ACT

WORKPLACE SAFETY AND HEALTH (SCAFFOLDS) REGULATIONS

**CERTIFICATE OF APPROVAL  
AS APPROVED SCAFFOLD CONTRACTOR**

This is to certify that  
**SR SCAFFOLD ENGINEERING PTE. LTD.**  
has been approved by the Commissioner for the purpose of carrying out the

Erection, Alteration and Dismantling (Metal Scaffold)

under Workplace Safety and Health (Scaffolds) Regulations.

HO SIONG HIN

COMMISSIONER FOR WORKPLACE SAFETY AND HEALTH  
SINGAPORE

# OUR NOTABLE PROJECTS

S.NO	PROJECT TITLE	CLIENT /MAIN CON	REMARKS
1	Contract9057-Proposed Erection of Entrance and Underpass Linking to Bukit Panjang MRT Station	ED. ZUBLIN	COMPLETED
2	Proposed 3 story podium Blocks,CCwith2 Basementat NORTHPOINT CITY	LUMCHANG/HKL	COMPLETED
3	Construction of 6 Blocks of staff Housing , 3 Blocks of Intuition Building and Ancillary building on LOT 10560P PT MK24at Upper Aljunied Road	SUNHUAN/HKL	ONGOING
4	Singapore Power Gridat various Substation	UNITITED WORKS	ONGOING
5	Singapore Power Gridat various Substation	CITIC ENG PTE LTD	ONGOING
6	Singapore Power Gridat various Substation	YUANJI ENTERPRISES PTE LTD	ONGOING
7	Proposed curtain walling and Aluminum Cladding to SINGAPORE POLYTECHNIC	UNI FLEX TECHNOLOGY PTE LTD	COMPLETED
8	GEHealth Care	TESLA ENG & CONST PTE LTD	COMPLETED
9	Addition and Alteration of exciting primary school of No5 Toh Tuck Road	LOH BROTHERS CONST PTE LTD	COMPLETED

# PHOTOS

